

TACOMA PRESERVATION SOCIETY



WWW.TACOMA.ORG.AU PH.08 8682 1124 SANDY POINT DVE, PT. LINCOLN
P.O. BOX 3088 PT. LINCOLN, 5606 JUNE NEWSLETTER 2015: NO.3



REPORT FROM THE WHEELHOUSE with Ross Haldane

TV has nothing on the job underway in the engine room. It's only a paint job, to lighten up those black corners. The rationale, being to tackle the dark, hard to get at corners, what've been bypassed by many a crew. You know the bits, on the outside, of the dark, black, crusty, rusty, sooty, grimy corners?

It'll make the grey bits easier to maintain and better loved.

Both Daryl and Fred have looked like Cornish miners tunneling to the back, on the top of the fuel tanks, to get at those bits. They are on the other side of the post, that holds the pipe that runs through the top, so that you can't get to the dark black crusty bits.

But when it's completed, you will see all the hard work, if you stand on tippy toes, and look into the newly painted bit at the back of the tanks. It's hard to see, and that why, crews of yesteryear, just stacked stuff in front of 'it' to hide the black hole.

Well done boys

On the right...

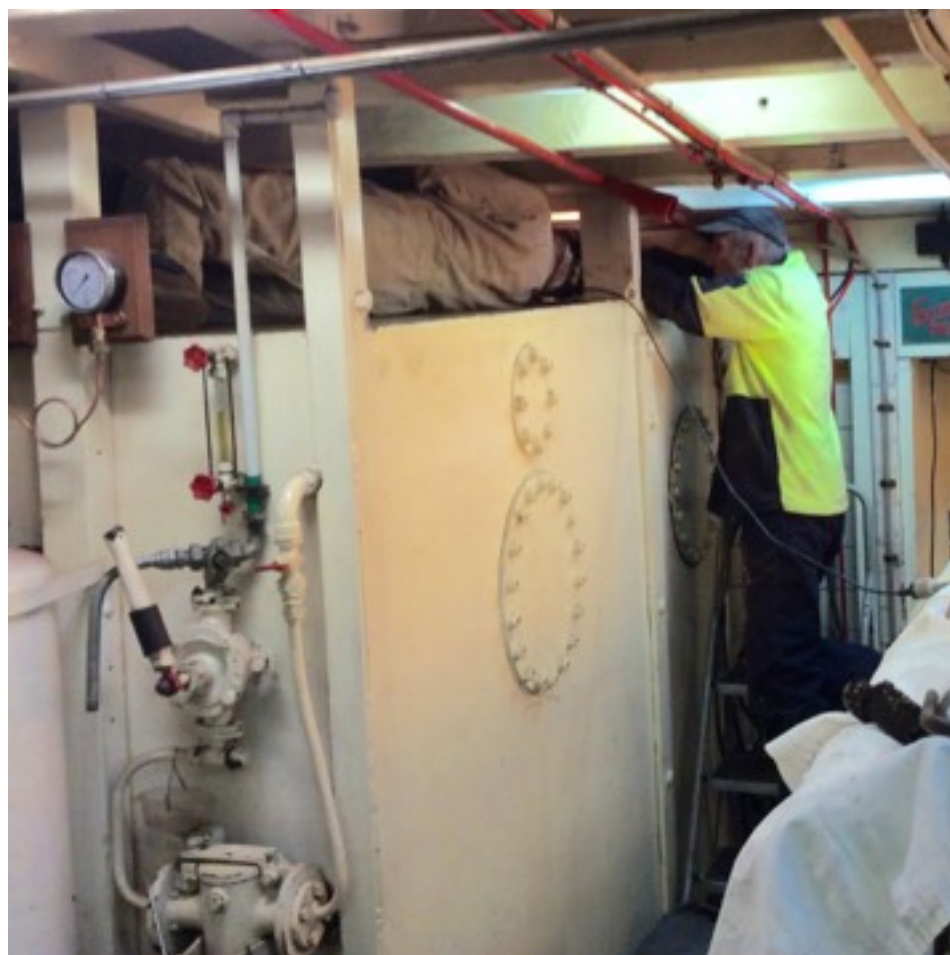
*Tucked beneath the main deck
Fred lays on top of the water tank.
He's replaced the rubber hose on
the air vent and now he's trying to
tighten a screw in a clamp, secur-
ing the rubber hose on the air
vent pipe.*

*To help him, Daryl [to the right of
Fred] on the ladder, holds this
clamp steady with the aid of a
long stick.*

*Trying to describe this scene is
difficult, study the photo and see,
just how little room Fred had to
manoeuvre.*

It's what I call

'Beyond the call of duty.'



But we're not the only group committed to the restoration of an old fishing boat. Looking around the world we have:



Jesus Boat Museum, Tiberias

In 1986, an ancient boat was pulled from the mud along the north-western shore of the Sea of Galilee. It was a unique and exciting find that gives us an idea of the sort of boat used during the time of Jesus.

The boat has been dated to the 1st century AD based on pottery and nails found in association with the boat, radiocarbon dating, and hull construction techniques. Evidence of repeated repairs indicates the boat was used for several decades, perhaps nearly a century. When it was considered beyond repair, all useful wooden parts were removed and the remaining hull sunk to the bottom of the lake.

The Galilee Boat, [pictured below] is apparently the type of boat that was used on the Sea of Galilee for both fishing and transportation across the lake. It is likely that this sort of boat was used by Jesus and his disciples, many of whom were fishermen. Boats played a large role in Jesus' life and ministry — they are mentioned 50 times in the Gospels!

Extract from website

www.sacred-destinations.com/israel/jesus-boat



Scottish Fisheries Museum gets Coastal Communities Funding

The Scottish Fisheries Museum has been successful with a grant application for £166,857 from the Coastal Communities Fund (administered by The Big Lottery) towards a £194,000 project for boat-building and conservation work. The project will enable the Museum to carry out work on its own collection of nineteen boats, including Reaper and White Wing, community projects like the James & Mary Walker and Fruitful and look to develop the project sustainably in the future. The project will be important in helping to keep traditional skills alive as well as maintaining the strong tradition of boat-building in Anstruther. Past companies included the East Fife Boat Building Co, Alex Aitken, Smith and Hutton, Walter Reekie and J.N. Miller and Sons. The first priority is to appoint a Boat-building Coordinator and then to recruit two apprentices. If you are interested in these posts please request further details from: simon@scotfishmuseum.org



AMERICA, the work on the WESTERN FLYER continues.

www.ksbw.co for updates. m/news/john-steinbecks-western-flyer

PORT LINCOLN NEWS:

Tacoma's collection of flags continues to grow. Our latest addition is a tuna fish pendant (shown on left) at Streaky Bay Farmers Market with Carin Haldane. It is a gift from Japanese friend Higashino Asako'.

EVACUATION OR RETREAT....OUR NEW BERTH

There is some positive news to report. The Port Lincoln City Council has commissioned, a \$20,000 report from Tonkin engineers to investigate the best possible location, infrastructure and out come to facilitate berthing and access for the tourist trade [including Tacoma]. The report is due by the end of June.

It's becoming urgent for the TPS, as we may have to vacate our present berth and have nowhere suitable to go, The locations being investigated are, the Port Lincoln Town Jetty, Axel Stenross Maritime Museum, the Brennan Jetty and the Marina . The TPS preferred location is the Marina option (refer to Lincoln Cove Service Wharf Upgrade - May 2015 on the NEWS page of the Tacoma website).

CREW'S DIARY:

THE LANDING THAT NEVER HAPPENED ANZAC Eve 2015

The planning was executed to the tenth degree. The rowers were keen, the young soldiers eager and the gunnery officers at the ready. The re-enactment of the Gallipoli Landing was to be one of the main features of the Port Lincoln ANZAC celebrations. It was to be followed by the Dawn Service, Coffin Bays Gallipoli Beach BBQ and the evening ball. But the weather man got it wrong and our plans were wrecked.



Some of our crew were eager to sail at all costs, but reason prevailed before the 30k to 40k gusting to 45k knots. There were thoughts, that many folk would be in their "fox holes" watching events on 'The Big Screen'. But the Aga was hot, filled with party pies and there were sandwiches plus red wine.

So the Diggers spent the night aboard the Tacoma, tucked up in the Marina, ropes tight against the building gale, with merry men and young nurses keeping all in the galley heartened with their melodic singing.



ELEMENTS OF SHIPBOARD SAFETY

'Its not always idle chatter and cups of coffee around the galley table'.

A group of members undertook an 'Elements of Ship Board Safety' course with Travis Henson from TAFE.

They practiced fire fighting, crawling into a in a life raft plus learning all about the bad and scary things that can happen on boats. However it's all in a good cause to train our crew in the wonderful ways of being safe on the water .



2015 five day Tuna Poling Trip:

Monday 9th to Saturday March 14th.

Reported by Fred - photos Ian Doyle.

Ross Haldane – Skipper

Fred Houweling - Crew

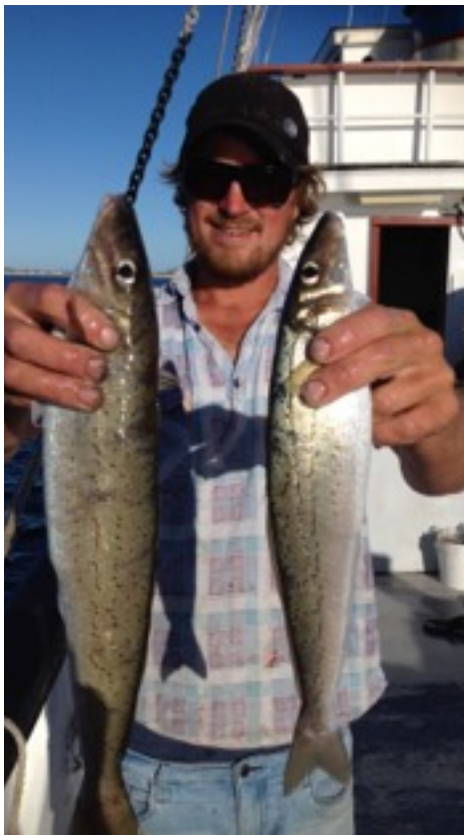
Leigh, Zach and Jared Chambers – professional SE cray fishermen

Ian Doyle, Chris Hanson, Ben Hawke, John Symons and Geoff Bayley.

After leaving Port Lincoln on Monday afternoon at 1700 hours on the high tide, our first task was to catch live bait for the trip. We did this in Boston Bay after the sun went down. The first shot of the historic 60 year-old purse seine net was a bit of a dud and we got it tangled. The second shot however delivered a very satisfying result. We scooped pilchard from the net using a hand held net and put them in the holding tank on the back deck. This tank is filled with a continuous stream of seawater. The pic shows Zach Chambers and Fred Houweling (left) trying to stop the pilchards from getting stuck in the overflow screen.

The net was then cleaned and stowed before we bunked down for the night leaving Ross and Leigh to guide the Tacoma to the safe anchorage behind Taylor Island. We arrived shortly after 0400 hours.

An early start and we steamed to the Cabbage Patch in relatively good weather. Using lures, we found a school of tuna deep down and with the fresh pilchards we ‘chummed’ them to the surface. We poled our first sixteen tuna, with the crew taking it in turns to land a fish. Most were double poled and the biggest weighed 25 kilos. It was an adrenalin rush for all onboard. They were carefully landed, processed, tagged and put into ice slurry a short time after they were poled. That evening we again anchored at Taylor Island and enjoyed a memorable roast. We steamed back to Port Lincoln on Wednesday morning to unload our catch. We secured further sales to Port Lincoln and Adelaide retail fish outlets, purchased additional quota and headed back to the Cabbage Patch for another successful poling venture. Everyone poled a fish on the trip and the final total was 32 good tuna. We again processed them, put them into an ice slurry and headed back to Port Lincoln on Thursday to unload our catch.



above: Jack Chambers with some of his catch. Below: whiting fillets ready for the pan and a bucket of pilchards.



We officially signed off with the federal fishing authorities before we steamed to Homestead Beach on Reevesby Island in the Sir Joseph Banks Groups for a relaxing couple of days of R & R.

To add to the excitement of the trip, while anchored at Reesby we had a visit from Australian Fisheries Management Authority (AFMA) officers. There was a discussion about the historic purse seine net on the deck, used to catch the pilchards a few nights before. The officer's questions were answered and all paperwork was in order. The issue of commercial fishers not legally being allowed to keep fish other than the species identified on their licence was discussed. The ongoing issue was of interest to tuna poling trip crew member and Executive Producer of ABC Landline Ben Hawke.

As recreational fishers, the crew caught a good bag of King George whiting. Along with Coffin Bay oysters, generously provided by Tacoma supporter Brendan Guidera from Pristine Oysters, Spencer Gulf MFV Atlas King prawns and some freshly caught calamari, the KG whiting was a triumph. The AGA and the crew chefs did a great job.

After a fantastic week on the water and enjoying the company of others and the magic of the Tacoma, we slowly motored back to Port Lincoln on Saturday. Most can't wait for the 2016 Tacoma Tuna Poling Trip.

And now for some trivia:

Pilchards also known as sardines, eat phytoplankton that floats on top of the ocean. When phytoplankton blooms it becomes the glowing Phosphorescence that can be seen in a boats wake. Fish could be classed as our next of kin because through evolution we evolved through the sea. The cells of our liver and kidneys are identical under the microscope to those of fish. Isn't that amazing!

Two of the Tacoma crew reported recently on their visit to the Sydney Maritime museum and home of the American USA Gallery, that was presented in 1988 as a Bicentennial Gift of money to the people of Australia to research, interpret and tell the story of the maritime links between the seafaring nations.

The USA Gallery, its collection and program of exhibitions and events about maritime science, technology, defense, history, art and nature continues to be funded by this gift. The USA Gallery had just one display connected to fishing and that concerned whales. There were many X-rays, photos, diagrams and facts on fish but nothing of the fishing industry or its history or the Jangaard connection.

The main part of the maritime museum was devoid of any information on fishing but It did contain a marvelous display on Shackleton's expedition to Antarctica plus Kay Cottee's sloop that she used to become the first woman to sail around the world solo. Seeing the yacht in all its glory with other many other full size dragon boats, whaling boats plus surf boards and boats was as fascinating as the displays on the history of submarines, navy, signaling flags and swimwear. But why nothing on fishing? Not a rod or net in sight. It's important that the Australian people acknowledge the Jangaard's assistance to Australia and especially SA. To tell how they literally started...helped make fishing economically viable with their gifts of unconditional knowledge which saved us years of sea trials. The development of purse seining, nets, the effect environmentally and politically.

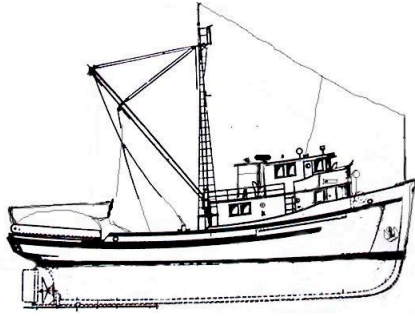
If not in Sydney then it should be acknowledged in a South Australian Museum.



Underneath the well written panel on the tuna industry is an automatic poling machine and a poler's rack.

However in the 'Killer Whale' museum in Eden they were delighted to find TPS video 'Three Men in a Boat' for sale. Pictured on left, is one of the many comprehensive information panels this one is on fishing but there were others about boats, nets, and all sorts of information. If you visit, allow a few, or more hours. The Killer whale museum is excellent and receives no government support.

Closer to home, we have Axel Stenross' museum which covers oysters, abalone, etc. The model boats are amazing and outside, they are always busy restoring boats. I never tire of visiting. From me it gets a 5 star rating. Remember to visit and support them. Chris and Fred houweling.



MEDIA RELEASE

1st July 2015

Tacoma Community Charity Days – Apply NOW

Any charity group wishing to raise money or wanting to offer their volunteers a much needed outing in recognition of the work they do are encouraged to apply for a Community Charity Day Trip on the MFV Tacoma.

“Last year as a result of a generous supporter, the Tacoma Preservation Society (TPS) was able to provide a number of these day trips to local charity groups,” TPS spokesperson Leonie Sawyer said.

“One group auctioned their trip for \$2,500.00 to raise funds and another, the National Service Association raised money for work at the Garden of Remembrance in Port Lincoln. Meals on Wheels used their trip to thank their members for their continuous work and support,” Leonie Sawyer said.

Since the Community Charity Days program began, \$10,000 has been raised for local charities by the Tacoma Preservation Society.

In addition to the Community Charity Days, Tacoma’s yearly plan includes day trips for weddings, parties and other functions. This heritage listed 84 ft boat is licensed to carry 49 passengers in sheltered waters.

If you’d like more information about the Tacoma Community Charity Days please write to the Tacoma Preservation Society PO Box 3088 or visit our website www.tacoma.org.au

More information:

Ross Haldane

President

Tacoma Preservation Society

M: 0467 488 554