



## TACOMA PRESERVATION SOCIETY

[www.tacoma.org.au](http://www.tacoma.org.au) M: 0477 162 488 PO Box 3088 Port Lincoln SA 5606

May 2017 Newsletter # 8

### REPORT FROM THE CROW'S NEST/WARDROOM:



Another good year - if it was wine, it would be worth bottling! Speaking of wine and other things, it looks like Carin and I have done our last Eyre Peninsula Farmer's & Fisherman's Market. The Streaky Bay Market in April lived up to its reputation and the weather was perfect. It has been a wonderful fixture of EP food development, but Carin and I have hung up our hawkers' tent and look forward to new adventures. Talking of adventures, this year we've had them all.

Rolling tuna trips, with mutinous rumblings on the back deck until the thud and flapping of tuna rained over the side! Well, raining might be exaggerating but they did come aboard at great physical expenditure. Forty-four fish in total - on the last day - last afternoon - the lucky last throw of the dice. How lucky can you get? Andy, Phil, Seppo and Jerry will tick that one off their bucket list.



Sadly the girls trip had all the elements of a successful trip - a hearty crew bird sighting, chumming fish, splashing pole, slapping squid jigging but nary a bite - but that's fishing. We did however have on board a precious cargo. Australia's youngest fisher, Claire Webber was with child. There was some discussion of what name it should be given - Bluey or Tina or Gannet after the ravenous birds we chased stealing our bait. Brought back memories of a child in a high chair scoffing all before it. We all wish Claire bon voyage on her new journey as a mother. We are sure she will be a brilliant one.

With the season changing, the Friday coffee club, alias 'maintenance workers' are looking towards warmer climes. Hopeful as they fly north, they will take the tales of their adventures to all those caravan parks. Fish that officially weighed in at 14 kg will magically grow to over 20 kg, and the ones that got away will be a least 30kg or the size of a fridge. Speaking of fridges, Neil Oliver's Coast TV Program was a great success starring Jack, PJ and myself.

A sneak preview can be found at [www.tacoma.org.au](http://www.tacoma.org.au) on the History page. The eight-part video, **Coast Australia Season 3** is available on line from the ABC Shop for \$29.99.

*TPS President Ross*

## TACOMA'S BOOKING SCHEDULE: *so far*

16<sup>th</sup> and 17<sup>th</sup> February 2018 \*Ladies' Tuna Poling Adventure Cabbage Patch - crew welcome.

23<sup>rd</sup> to 28<sup>th</sup> February 2018 \*Men's Tuna Poling Adventure Out Wide - crew welcome.

\*For a detailed flyer have a look at

*2017 Men & Ladies Poling Tuna Adventures ... go to What's On at the Tacoma website*  
[www.tacoma.org.au](http://www.tacoma.org.au)

### NEW BERTH UPDATE:

It's now a waiting game. We've done all we can in support of our tender. Our proposal is with the DPTI Minister Steven Mullighan. It appears two parties are applying for the same section of water.

The Minister has three or possibly four options:

- Grant the water lease to the current leaseholders and exclude TPS and the MFV Tacoma -
- Grant the water lease to the TPS and MFV Tacoma and exclude other parties -
- Grant the section of water to Tacoma plus another section to the other tenderer. This will require the movement of the lease some twenty metres in a possible ninety metres of available public waterway resulting in a win-win for both parties -
- Re engage with Port Lincoln City Council to do the job properly and build a community base facility we can all be proud of and one that will cater for all parties resulting in a win win win win win solution for everyone including the people of Port Lincoln.

We will know soon enough if Minister Mullighan is supportive of the idea that publically owned waterways should be developed for the benefit of the whole community. Also that one of the only eight historic vessels on this State's register is provided with the opportunity to find a high profile 'home' and make a significant contribution to tourism development on Eyre Peninsula.

Our long-term idea is to reinstate the sightline of the Fisherman's Memorial to Donnington with good creative design. This element of the public space environment could be thought through as well as redesign public trails that will bring more people through the site.



## HAPPENINGS:

Our latest addition is *Stardust!* LOOK what arrived on our doorstep - a beautiful little 16 foot timber boat ...and yes Carin is correct *boats do breed in our garage!*



The Whitehall Stardust that has been placed in the care of Ross and Carin was built by Hugy Shay. It took him four years to build in a lean-to on his house in NSW. His workmanship has produced a boat that encapsulated the concept of these fine boats.

You can sense a waterman just popping up to the waterfront bar to catch a quick drink and a bite to eat before jumping into his boat and rowing out to a rigged ship in the harbour to deliver a box of French wine.

These beautiful boats catch the eye as they grace the water. *Whitehall Rowboats* are considered one of the most refined rowboats of the 19th century. The basic design is much older and of European ancestry. It strongly resembles a sailing ship's gig or a Thames River Wherry used by watermen as a taxi service. They were first made in the U.S. at the foot of Whitehall Street in New York City to be used to ferry goods, services, and sailors on and off the boats coming into New York Harbor. The boats range from 14 to 22 ft in length, the larger requiring two people to row them. A *Whitehall Gig*, is the slightly longer version at 25 ft. It requires four rowers and a coxswain for a crew of five. They were the first boats to incorporate an inverted-hull frame set up to speed up manufacturing them.

The hull shape is characterized by a nearly straight stem and slight flare to the bow, rounded sides, with a keel running the entire length of the bottom and a distinctive wine glass transom with a full skeg. Considered one of the most beautiful rowboats, they are designed to handle the harbor chop and yet track straight. Speed was the issue with these boats, as the first to the ship with the goods generally received the lion's share of the sales. Later the shore patrol used these boats for customs, police issues, water taxi and newspaper reporting. *Ref: Wikipedia*

---

## JANGAARD FAMILY VISIT:



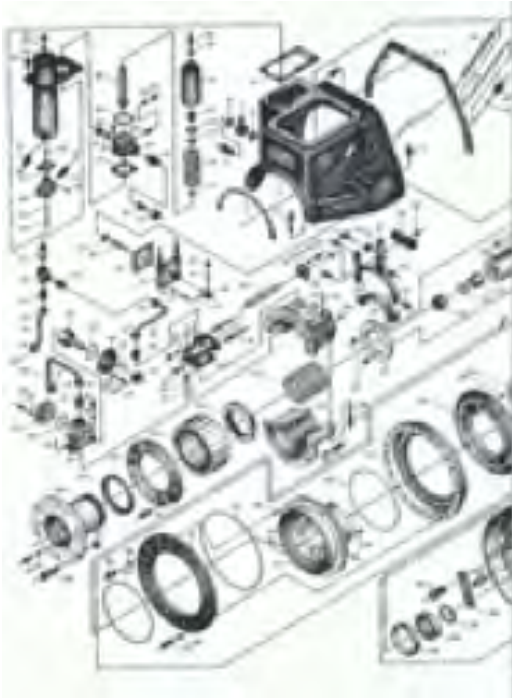
Three generations of Jangaards, the US / Norwegian fishermen who came to Port Lincoln in 1956 to help establish the tuna industry are coming to town. Sverre Jangaard's daughter and son-in-law accompanied by Katrina their daughter, her husband and granddaughter will be in Port Lincoln from October 23<sup>rd</sup>.

It's 61 years since their father, grandfather and great grandfather arrived in Port Lincoln. This part of their family story was dormant until Katrina Fries began to track her family tree. She discovered the TPS website - and the rest is history.

We are very excited about their historic visit. During their brief visit we will all have the opportunity to meet them on Tuesday October 24<sup>th</sup> and for dinner on **Friday 27<sup>th</sup>** at the Boston Hotel. *Put this date in your diary.*



## MAINTENANCE: *The clutch job*



Drip drip drip

No more hoping - the Grenaa clutch is about to get a makeover and so it should after 40,000 hours of doing about 400 revs a minute. That's 40,000 x 60 x 400 turns - that's 96 million turns ...or the distance in miles to the sun! Or 40,000 at 3.6 trawling, 5.7 times around the earth Or 144,000 miles x 50 ft. width - that's 1,440 square miles times ploughing the Kidman stations for 10,000sq miles ..you get what I'm saying!!!

The job will require about \$5,000 in parts and 2000 cups of coffee, 5 litres of milk, 2 pounds of flour (that's for the cake that Anna has promised) plus, lots of mmmmming and oooooooowing ...what should we do this with what part number?

But it will finally assist in lowering our oil usage and as a result we'll be helping to save the planet. Just another little job for the boys below ...and our team.

## A TRADITION BEGINS:



Founded in 1853, the White Mountain® brand has always been about making sweet family memories right at home, with ice-cream made by hand. From its beginning with Grandma's simple hand-crank model, generations that followed continued the tradition. Now, over 150 years later, not much has changed about the marvellous White Mountain® ice cream maker. You might be interested that Tacoma had on board a White Mountain® ice-cream maker when she arrived in Port Lincoln in 1952 so we thought - let's see if we can find one and have an ice cream maker on-board.

When we visited the Petrich family in Tacoma USA in 2012, we began browsing antique shops for the illusive ice-cream maker. Who would have thought that 5 years later it arrived by a rather curious passage of events? Six months after visiting Tacoma, our Canadian friends Don and Ruby phoned. "Are you bidding on it," Don asked. "On what," was our reply.

Apparently Don had been trying to acquire an ice-cream maker since our visit and eBay had just the ticket, except that on each bid a \$1 was added and it was now \$145. He was ringing to confirm if I was the mystery bidder?

No luck with eBay. Don searched the internet <http://www.whitemountainproducts.com/our-story/our-story.html> and finally he found a \$120 beauty in Texas.

Then the real fun started. The cost of shipping it to Australia was \$450.00 - OOOOPS. Three years later, the said ice-cream maker is shipped free to Don and Ruby's Arizona address.

It then continued by car to Don and Ruby's home in Camrose, Edmonton, Alberta and then by plane to Calgary, San Francisco and then to Auckland. All for free as luggage with Don and Ruby on their recent trip to Australian.

It's here that things go astray and to cut a long story short - through fog, international customs, airfreight to Melbourne and courier to Lincoln, we finally saw the said parcel, which had it contained the crown jewels, might have been a reasonable cost.



We now have the pleasure of making possible the world's most expensive ice-cream and that not including the transport. You should see the recipes. You need a dairy farm plus other expensive ingredients to make this lovely product.

We thank Don and Ruby for their gift to the TPS and we know it will provide lots of joy to the crew and our passengers.

*The moral of the story is 'always consider the first price offered' Ross*

---

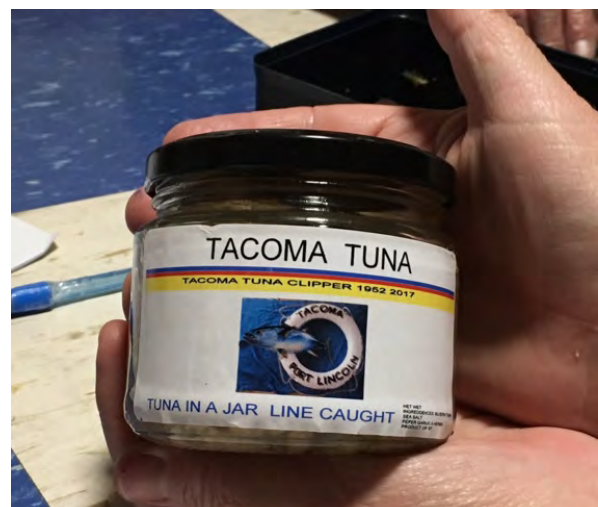
## TUNA FOR SALE:

**This Blue Fin Tuna was caught near Wedge Island in the Great Australian Bight on the Tuna Clipper TACOMA using traditional pole & line methods.**

**All proceeds from the sale of this tuna contributes to the continuing restoration of the MFV Tacoma.**

To order phone Ross on 08 86821124

- frozen \$30.00 per kilogram.
- smoked and vacuumed packed, (approx \$6.00 per piece)
- 400 gm Jars \$10.00



## HISTORIC BOAT RESTORATIONS:

While the world that *The Western Flyer* lives in now may seem a bit bleaker than that of her youth, she remains steadfastly resilient. The *Western Flyer* is now in Port Townsend, Washington USA.

“This boat has a spirit that lives on,” Chris Chase, principle shipwright said, smiling, and proceeded to tell me about how she’d sunk four(!) times - three of them reaching the bottom of the sea. Chuckling, he added, “she’s just kind of shrugged it off.” As they work to restore her, they’re careful to “do justice to her” and her tangible spirit.



This spirit was captured by Steinbeck. He wrote of *The Flyer* as an actual character and the following is an excerpt from his book *The Pearl*.

*This was an evil beyond thinking.  
The killing of a man was not so evil as the killing of a boat.  
For a boat does not have sons, and a boat cannot protect itself,  
and a wounded boat does not heal.  
to “do justice to her” and her tangible spirit.*

*Ed note: See Tacoma Preservation Society newsletter no 2 2015 for the story of the Western Flyer being found in the Washington’s Puget Sound, 2012*

---

## NEW MEMBERS DRIVE:

We are being optimistic and hoping that by next year we will have our new berth in the Marina. This will require an upgrade of our tours. The plan is for Braden, our resident super guide, to run some workshops about the joys of being a guide on board the *MFV Tacoma*. We really need more guides for when he gets a fulltime job after he graduates from year twelve later this year.

It’s a corny say but it is so true, *many hands make light work*. We need new members. Look around and see if you can round up some friends to join the Tacoma Preservation Society. We need numbers to maintain our strength and of course membership fees are vital in helping pay for Tacoma’s insurance policies and boating licences.

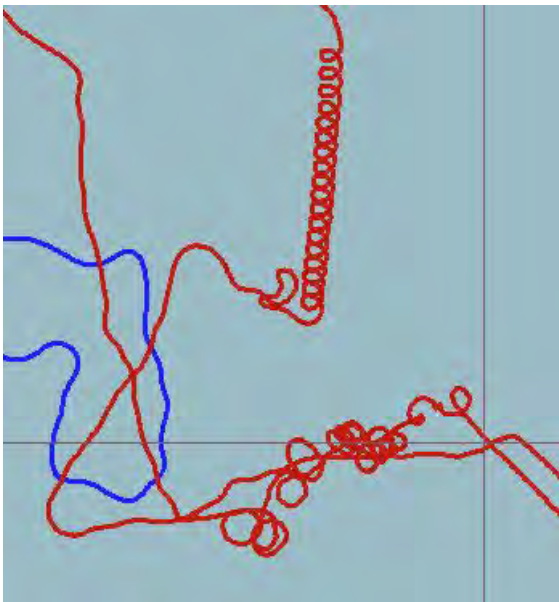
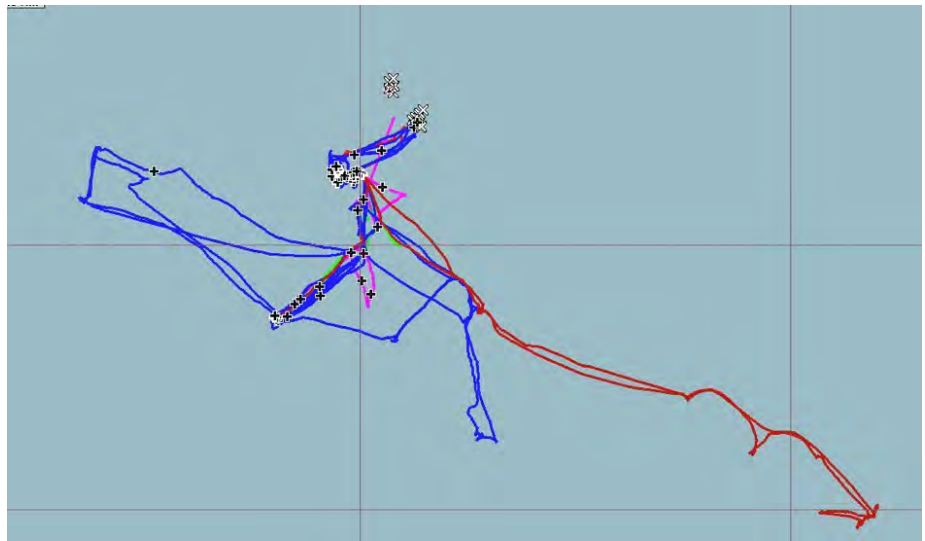


## ON BOARD TACOMA:

**Right:** One of Tacoma's many tracks on the GPS during the 2017 Men's Tuna Poling Adventure.

This is recorded near Kangaroo Island. No land is shown here to disguise the fishing spot.

A total of 450 sea miles were travelled to catch 44 tuna.



To find the tuna, we watch for birds diving into the sea. The tuna come to the surface chasing baitfish and the birds attack to school of bait fish from the air - which leads us to the school of tuna.

**Above:** This is the GPS record off Neptune Island on the 2017 Ladies Tuna Poling Adventure.

**Right:** Looks like the real thing? But no sadly, it's Tina Tuna.



## EXPRESSIONS OF INTEREST for 2017 / 18:

### A Painting Workshop: *The Sea*

You are invited to sign up for an on-board painting day. No we don't mean the rigging, hull, deckhouse, bulwarks or scuppers.

The idea is *A Day On the Bay* learning how to paint water.

The offer is for twenty people with four instructors to be part of what will be a great day – to learn about the skill of painting seascapes - and to also enjoy a lovely lunch on-board the *MFV Tacoma*. If you'd like more information, give **Kate** a call on **0428 939 819**.

This video will give you an idea of what is planned <https://vimeo.com/32430680>

*Port Lincoln artist Ross Haldane shows ABC Open West Coast SA producer Emma Pedler how he paints water. Shown in a time-lapse fashion by using multiple still images.*



---

## HISTORY IN THE MAKING:

A letter written by **Clara Haldane** to her mother, just after the launching of the *MFV Tacoma* in Port Fairy on November 5<sup>th</sup> 1951.

*The men worked hard finishing the job on Saturday night and they were all set to launch about 2 am on Sunday morning. The towns people became suspicious when they saw all the activities and lights burning where the men were working, and then the fence came down and the electric light wires along the path being taken down confirmed their suspicions and many people gathered on Saturday evening outside out fence. The men finished up with the low tide and everything was in position to slip her in on the high tide early on Sunday morning.*

All future contributions to the TPS Newsletter will be gratefully received. Please email them to me on [medley0246@gmail.com](mailto:medley0246@gmail.com) if you have an article to offer. I encourage you to have a look at the TPS website [www.tacoma.org.au](http://www.tacoma.org.au)

**Editor: Chris Houweling**  
[medley0246@gmail.com](mailto:medley0246@gmail.com)