

Fishermen's Memorial Promenade

Australia's Seafood Capital

A Community Marine Facility for Lincoln Cove

Prepared for the Port Lincoln Community by the
Tacoma Preservation Society



Port Lincoln is a thriving City where residents and visitors enjoy a clean, safe and unique location, enhanced by the surrounding natural environment. Port Lincoln is the major service centre to the Eyre Peninsula, traditionally a hub/port for the wild capture fisheries plus a burgeoning aquaculture cluster of industries and growing recreational boating sector

The City of Port Lincoln is constantly striving to improve positive outcomes for the community.

In an enviable location, Port Lincoln abounds in exciting and interesting places to work, live and enjoy. Port Lincoln has people with the will, the knowledge and the commitment, to enjoy the very best in life.

Striving to be more, City of Port Lincoln, your community, your place...

The Tacoma Preservation Society (TPS) has commissioned preliminary design concepts to complement Port Lincoln City Council approved development (DPA) of a pontoon located in the Lincoln Cove Marina. As part of the design concept, the TPS has consulted with Mick Puglisi, primary instigator of the Fisherman's Memorial and Marijan Bekic, designer and sculptor of the Memorial. The design includes a public promenade along the edge of the Lincoln Cove Marina, with facilities that greatly improve access for the public through this section of the Marina, by re-routing the Parnkalla Trail to reflect the objectives of the **Port Lincoln City Council Development Plan, March 2011**, and as submitted to the **Open Space Strategy, November 2016**, as well as the **Foreshore, CBD & Marina Precinct Master Plans 2019**, outlining the following objectives:

OBJECTIVES

- The provision, in appropriate locations, of marinas, pontoons, jetties, piers, wharves and boat moorings that cater for vessels and to:
 - (a) maintain public access to the waterfront
 - (b) not compromise public safety
 - (c) preserve the structural integrity of the marine infrastructure
- Upgrade visitor facilities and infrastructure at key tourist locations and improve visitor access to tourist attractions.
- Integrate the planning and management of urban infrastructure in an efficient manner
- Align land use planning with specialty tourism development priorities.
- Improve the appeal of destinations by encouraging the development of attractions.
- Develop appropriate infrastructure and facilities for visitors.
- Ensure the interpretation of features of interest and understanding of tourist attractions.”

The proposal will transition pedestrians through the Marina precinct to the water's edge. It is the perfect place to create a balanced environment for the covered shelter of people, loading and unloading for the marine industries and recreational boating, or just for relaxation activities. Combined with the importance of the Fishermen's Memorial, it will create an aesthetically pleasing place.

The Shark Diving industry is very important to the State's economy. It provides 80 jobs, currently attracts more than 10,000 visitors and injects \$12.8 million into the State's economy. The anticipated growth is up to 15,000 visitors a year. Events like the Lincoln Week Regatta and other marine activities will be enhanced by greater access to the site with both land based and water pontoon access.

The Lincoln Cove Marina is one of the more active marine locations in Australia with hundreds of movements of commercial fishing, charter vessels and the recreational fleet.



Located on Boston Bay and Proper Bay, Port Lincoln is focussed in two locations.

1. The Esplanade Town Centre with the Tuna Poler, Matthew Flinders and Makybe Diva statues, lawns and foreshore.
2. The Lincoln Cove Marina with a combination of residential and commercial marine activity, Australia's Seafood Capital is home to Australia's largest fishing fleet, plus the Fisherman's Memorial and jumping off location for shark diving and swimming with sealions.

A purpose-built 90 metre pontoon will provide public access to and from the water in line with the City development plan objectives. Port Lincoln currently has no dedicated passenger or recreation marine loading point. The project's design will integrate a public open space with a marine access pontoon to meet a projected needs of a projected 20,000 persons per year.

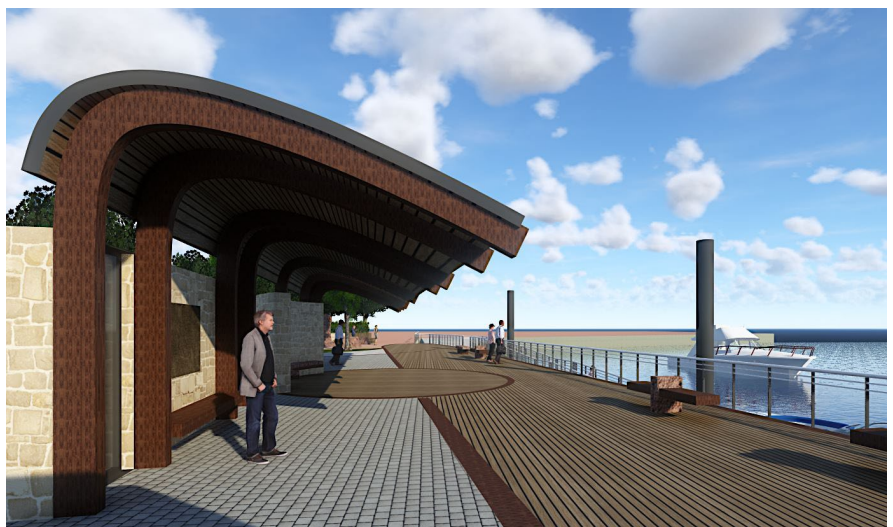
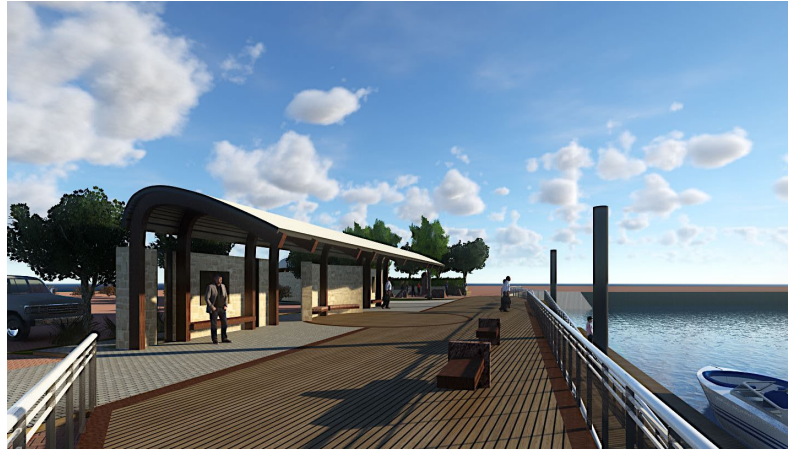
Proposed design concepts:

1. A 90-metre pontoon with a capacity of 200 tonnes.
2. An expanded boardwalk promenade around the hotel boardwalk dining and in front of the Fishermen's Memorial.



Fishermen's Memorial Site Upgrade

The Tacoma Preservation Society commissioned a design and concepts of an upgraded Fishermen's Memorial precinct in 2019.





The design incorporates the stone visual of the Memorial. The trees provide shelter and open space for outdoor activities, adding softness to the site. An expanded Promenade utilises what was a rough rock revetment and ties the composition together to lead people right to the edge of the water. The handrails give visitors a sense of boundary; a place to stand and watch.

The site will contain graphics to enhance the joy of 'boat spotting'. The overall design will incorporate historic markers to articulate the flow of fishing from pre-history to the Aboriginal people for over 40 thousand years, with the Nauo (south-western Eyre) and Barngarla (eastern Eyre) people, to whalers, sealers, oyster dredges, cutters and clippers to the current fleet.

The graphical elements will focus on the fishing boat names. This has the potential to engage a wide section of the Australian maritime population, as has already proved successful with our own Axel Stenross Museum.

Examples of Successful Promenades

Many other cities have reaped the benefits of successful harbour projects - Sydney's Darling Harbour, Hobart's Constitution Dock, Docklands, Fremantle Harbour, and the Cairns and Geelong waterfront reinvigation projects, plus a thousand other magnificent waterfronts worldwide.







Port Lincoln's Lincoln Cove Marina has dramatically enhanced the economic viability of the city. In 2022, the Marina is falling short of its true tourism potential. It was constructed in 1985 and is now over 37 years old and showing its age and lack of civic pride. A reinvestment in the public aspects of this precinct is warranted to maximise the potential of the site for the local community and the increasing number of tourists visiting the city.

Our foreshore and coastlines are meeting places for people. The TPS believe that the time to act is now as future generations won't have this chance to discuss what is possible. This project, although not grand in scale, will be an addition to the Port Lincoln City beach front and waterfront areas and will add a practical and aesthetic richness for all to enjoy. This concept also has the potential to create further discussion on how best to develop the adjacent waterfront precincts of our waterfront City.



An improved Marina precinct will compliment the investment in the Port Lincoln leisure centre. With further community consultation and engagement with all stakeholders, the Tacoma Preservations Society believes that an important piece of Port Lincoln's open space can realise its true potential.

Prepared by

The Tacoma Preservation Society

www.tacoma.org.au

tacoma.org@gmail.com

September 2022