

Tacoma

Newsletter

www.tacoma.org.au | Tacoma Preservation Society | Port Lincoln

Crew Performance and Training

Cooking on a rolling, pitching stove, catching runaway plates is not for the fainthearted and requires great skill. Jack knows all the tricks. However, at 90, he has hung up his frying pan. The cook's job was taken by a 19-year-old English backpacker chef, Trev Grant, from Coffin Bay's 1802 restaurant. He quickly discovered the challenges of cooking on a fishing boat with an ancient but efficient AGA stove. However, he was familiar with the stove from his parents' English home. A fishing boat, with its ever-changing plan, is a cooks' nightmare, but he performed well. The ever-reliable Trev Grant showed his culinary magic, only losing a masterpiece to gravity once when it ended up on the galley floor. The helmsmen need more training in preventing the boat from sudden rolling motions, but it's rumoured that they do it just to let the galley crew know who is driving the boat!

During our two tuna trips, there was a lot of training on anchor winch procedure's and this time the training was put to the test. The failure of our pitch ram resulted in the propeller going into the default reverse – a hard reverse! When the command: *"Drop the anchor, drop*



FV Tacoma

Port Fairy is Waiting for Tacoma

Tacoma will leave Port Lincoln on the 21st of March and weather permitting arrive in Port Fairy on the 25th.

The dredging work in the Moyne River is currently underway with the removal of two sandbanks blocking the entrance.

The celebration will be during Easter, Saturday, and Sunday, 30th to 31st with the following events: A tuna toss, The famous Port Lincoln Chef, Tony Ford's cook-up "Fish on Fire", a talk by Claire Webber on "Women in Seafood", and a history talk by Ross Haldane, "From Cousta Boat to Tuna Clipper". Finally, Garry Kerr will be speaking about his fishing documentaries.

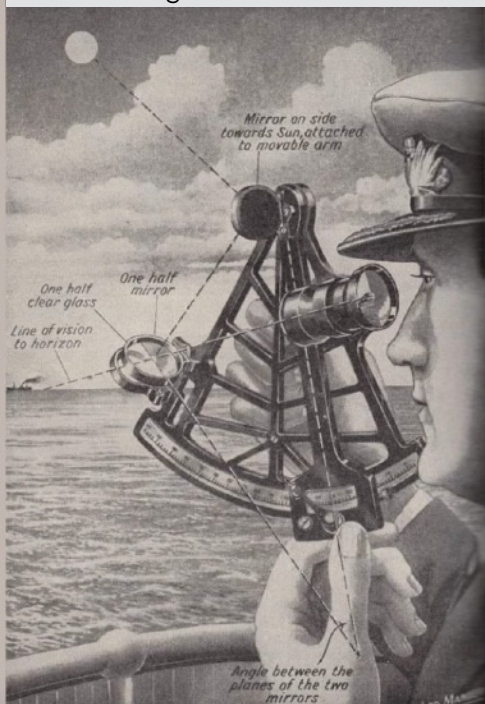
Then, a formal "back deck get-together" with the majors of Port Fairy and Port Lincoln, Karin Foster, and Diana Mislov.

The Tacoma Preservation Society's media expert, Ian Doyle, will organise an "ABC Landline" production featuring the Tacoma arrival with an expected audience of over 1 mill people. The visit will be demonstrate the shared history and legacy of Port Lincoln and Port Fairy. The society's President will present a model of Tacoma as a gift to the Port Fairy community.

showed their skills and the boat came to a halt. Well done David and Grant!

Sextant Training

How many of you know how a sextant works? Seems these days it's a lost art. I learned the basics when an old danish skipper explained it all on the back of a cigarette pack. Just remember: 'You always know exactly where you are. It's the land that gets lost!'



Fred doing sextant training after completed a successful restoration of the compass.



The entrance to Port Fairy on the Moyne River. Red arrows indicate the two sites where dredging is undertaken.

The 2024 Tuna Trips Completed

Tuna trips by Ross the Skipper.

Two men's trips and one lady trip were planned, but that was not to be.

The first trip is always a tester - where are the fish? After receiving advice from the commercial fleet at sea and the planes in the air, 2024 was going to be a strange season. A rare upwelling event, emanating from the Bonny upwelling off the southeast near Mount Gambier, produced a significant algae bloom and associated night florescence (Noctiluca sp.). Tacoma steamed from Thistle Island to Althorpe in a sea of red, with not a bird or fish in sight. After three days, the team doubted any fish were to be found. But the fish weren't hungry! We caught nice fat tunas over 5 kg heavier than last year, but so well fed that no amount of live or frozen bait could bring them to the boat. We caught 50 fish only.

The second trip, we visited Low Rocks, Avoid Bay, Greenly, and Rocky Island, back to Low Rocks where we sat idle on a glassy sea throwing bait and catching the odd fish. We caught only 40 fish.

Our 50-year-old bamboo poles were not up to the increase in fish weight and two did not pass the bend test. We will have to upgrade with new bamboo poles for the next season. The old Smith lures were the best performers, out-classing the fancy deep divers and their colourful mates.

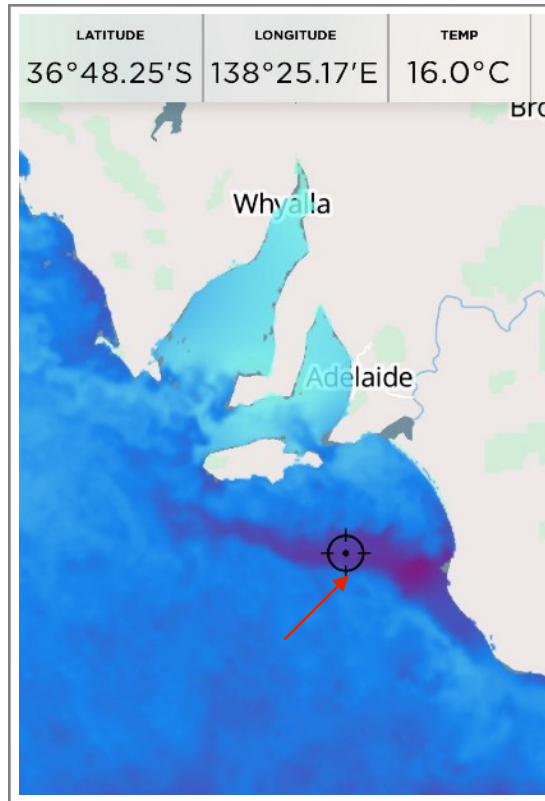
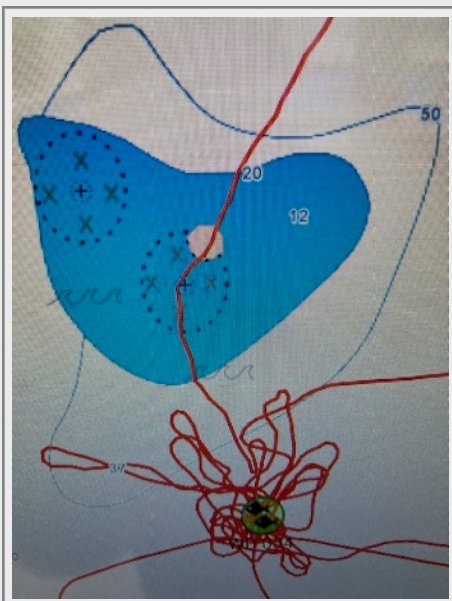
Something more

Skipper "Hvide Peder" (White Peter) onboard a Danish anker seiner E202 Torino. Checking the vessels position using DECCA seen behind. The three



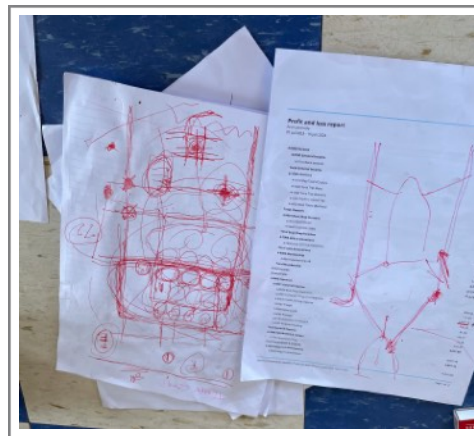
dials, red, green, and blue, show combined the ship's position. The signals are transmitted over HF frequencies and a special chart showing hyperbolic lines is required.

The modern plotters are not that reliable because many places the GPS has not been aligned with the charts (ground truthed). This image is from the last tuna trip. The red line is Tacoma's path, right over rocks which were not there.



Map showing the massive bloom.

Pitch and Propeller Trouble



The Skippers plan on how to tow Tacoma to the slip.

On returning to port and entering the channel, the variable pitch ram decided it had had enough, and would not leave the reverse position of the pitch propeller. After much excitement, and with the aid of a tugboat and others, we were towed to our berth. This, unfortunately, resulted in the cancellation the women's trip. On Sunday 3rd March, we moved Tacoma to the slip and on the following Monday she was taken up.

Port Townsend Shipwrights Co-Op

Since 1981 the co-operatively owned Port Townsend Shipwrights has worked on a wide variety of vessels from small traditional daysailers to historic halibut schooners to immaculate cruising boats. We are proud to be recipients of a 2023 Classic Boat Magazine Restoration Award for our extensive work on the famed 1937 WESTERN FLYER.



The mechanical work on the pitch cam and the clutch was done by a team of professional people from Q Mechanical Services in Port Lincoln.

Their contribution and hard work was impressive. On behalf of the Tacoma Preservation Society, the Editor, in the absence of the President, will like to express gratitude to all the mechanics and volunteers who undertook this work. Thank you guys!

After removing the rudder, the propeller and the shaft, the shaft pieces were laid out and showed damage to the uppermost male and female thread of the pitch shaft. The clutch was broken down and needed repair as well. Replacement was necessary. Tacoma back in the water as soon as possible.

